



Citizens for Nuclear Technology Awareness
 “The Citizen’s Nuclear Voice”

CNTAWARE



CNTA Annual Report By Clint Wolfe

What’s Inside:

- Income/Expense Graphs
- Teller Recap
- Lots of Photos
- Blue Ribbon Remarks
- Slogan Winner
- Sponsors/Businesses
- Business Card Ads
- January Breakfast
- 20th Anniversary

Well, you have done it again. Through your support, CNTA has been able to influence public debate about nuclear energy and the Savannah River Site (SRS), and to further education initiatives related to science, technology, engineering and math (STEM).

We have attached a summary budget sheet showing that we ended the year with a small surplus in our checking account and that the \$30K endowment fund which we started this year has generated \$2K in additional asset value.

In addition to numerous letters to the editor, opinion editorials, breakfasts, dinners, a workshop for teachers, five \$1500 essay contest scholarships, two Robert Maher \$5K scholarships, sponsoring an interactive nucleus exhibit, a congressional visit to Washington, D.C. with CSRA community leaders, an active role in the Carolinas Nuclear Cluster (CNC), public speaking engagements, etc. , we were also invited to participate in a panel on reactor and fuel

cycle technology before the President’s Blue Ribbon Commission (BRC) in Washington, D.C. We were also slated to be on another BRC panel in early January, 2011 in Augusta and to offer public comment at a BRC meeting in Carlsbad, N.M.

We coordinated our Teller lecture and speaker with initiatives announced at the SRS to engage in collaborations with Small Modular Reactor (SMR) companies. We wrote in support of SRS, SMRs, the Mixed Oxide Fuel Fabrication Facility, recycling used nuclear fuel and maintaining H-Canyon as a national resource which could provide the capability to perform research, development and demonstrations of various recycling protocols.

As we look ahead to 2011, our 20th anniversary year, we see major challenges. While our influence is growing, even beyond the CSRA, federal budget constraints eventually impact our funding through our sponsors’ business prospects. We will have to expand our efforts

to generate support from commercial nuclear suppliers who are on the verge of major new opportunities. As always, the support of our individual members is crucial to our success.

Last year, we overcame a projected \$10K budget deficit and managed to generate a small surplus. This year the task is even more daunting as we are projecting a \$31K “management challenge.” This means that your support of functions like the golf tournament, the Teller lecture and maintaining or increasing your membership level take on added importance.

With your continued support we expect to have a great 20th anniversary year. Let’s enjoy it together!

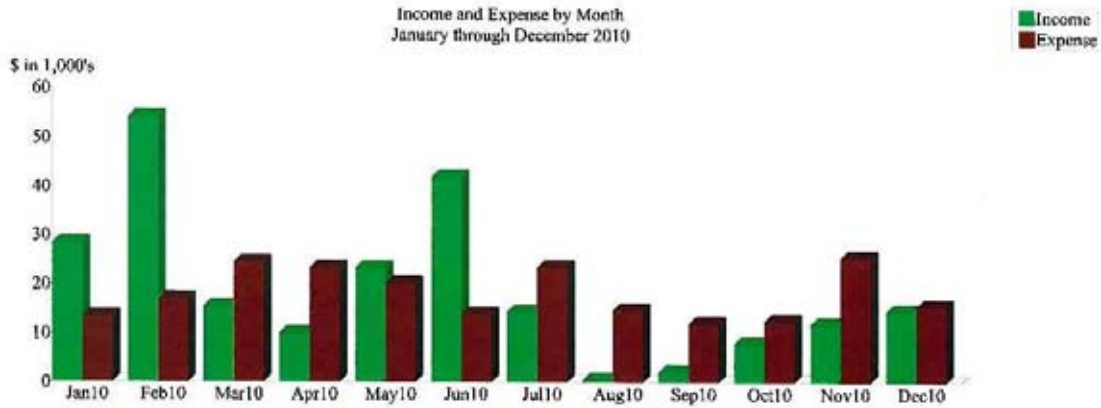


**January 01 to December 31, 2010
Year-End Financial Report for CNTA Executive Committee**

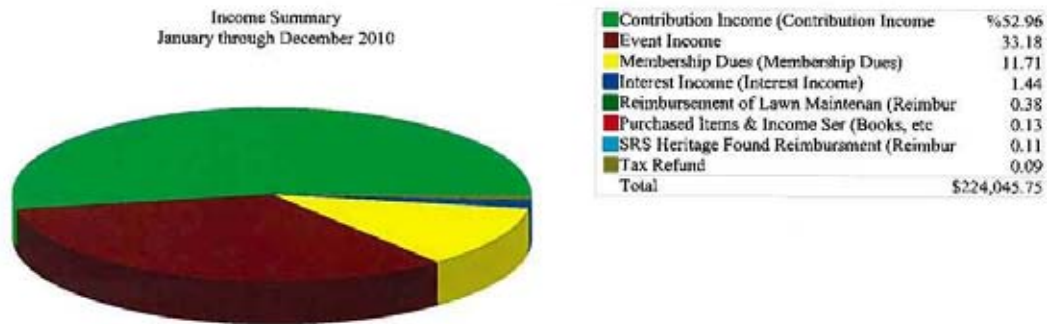
1/19/2011

	<u>Jan - Dec 10</u>	<u>Budget</u>	<u>% of Budget</u>
Ordinary Income/Expense			
Income			
Reimbursement of Lawn Maintenance (Reimbursement from building tenants for their portion of lawn maintenance.)	860.00		
SRS Heritage Found Reimbursement (Reimbursement for newsletter)	236.00		
Contribution Income (Contribution Income)	118,650.00	136,835.00	86.71%
Event Income	74,343.69	65,500.00	113.5%
Interest Income (Interest Income)	1,606.65	1,500.00	107.11%
Membership Dues (Membership Dues)	26,245.00	28,000.00	93.73%
Purchased Items & Income Ser (Books, etc. & printing)	296.30	400.00	74.08%
Total Income	<u>222,237.64</u>	<u>232,235.00</u>	<u>95.7%</u>
Gross Profit	222,237.64	232,235.00	95.7%
Expense			
Civic Dues (Membership Dues to Civic Club)	720.00	300.00	240.0%
Meetings - D (Meetings - D)	220.48	500.00	44.1%
Mementos (Cups/Pens/Other Giveaway Item)	841.61	200.00	420.81%
Miscellaneous	347.40	1,000.00	34.74%
Office Supplies - C (Office Supplies)	10,326.22	14,150.00	72.98%
Postage & Shipping - B (Postage & Shipping - B)	847.93	1,800.00	47.11%
Printing & Publications - B (Printing & Publications - B)	285.24	500.00	57.05%
Professional Fees - A (Professional Fees)	3,071.75	3,500.00	87.76%
Programs and Miscellaneous - F (Programs and Misc - F)	63,831.77	75,250.00	84.83%
Rent & Utilities - C (Rent - C)	22,983.86	23,545.00	97.62%
Salaries, Taxes & Benefits (Salaries)	111,991.42	111,490.00	100.45%
Taxes	0.00	0.00	0.0%
Total Expense	<u>215,467.68</u>	<u>232,235.00</u>	<u>92.78%</u>
Net Ordinary Income	6,769.96	0.00	100.0%
Other Income/Expense			
Tax Refund	190.46		
Total Other Income	<u>190.46</u>		
Net Other Income	<u>190.46</u>		
	<u>6,960.42</u>	<u>0.00</u>	<u>100.0%</u>
Assets as of December 31, 2010			
CD	27,418.87		
Money Market	\$52,812.84		
Endowment Fund	32,021.80		
Checking Account	4,985.37		
	\$117,238.88		

Income and Expense by Month
January through December 2010

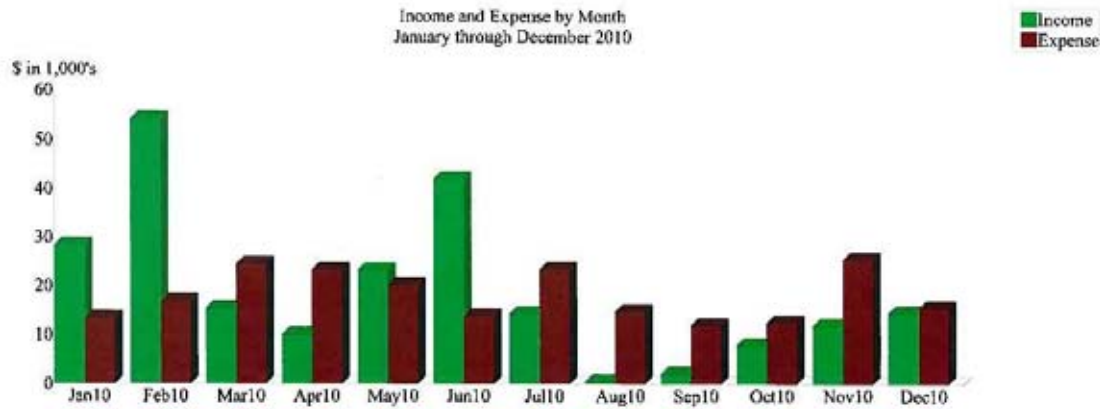


Income Summary
January through December 2010

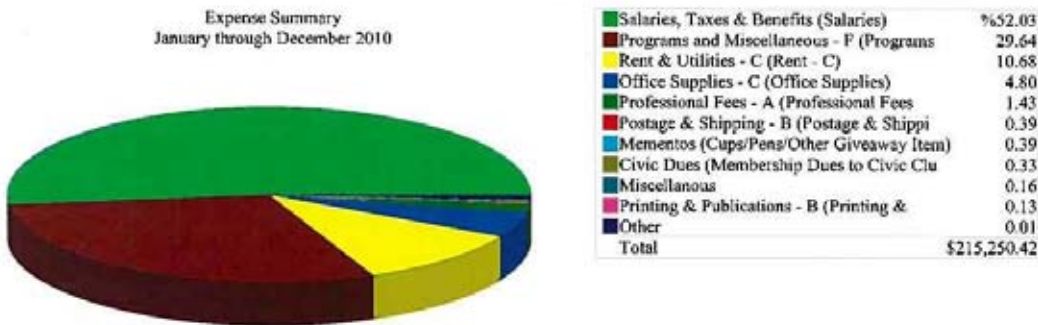


By Account

Income and Expense by Month
January through December 2010



Expense Summary
January through December 2010



By Account